

Form for the design of ballasted structures

PROJECT DATA:

Address of the installation (coordinates if possible)

Remarks

Total no. of modules:

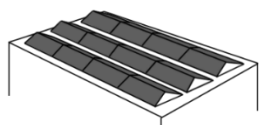
Modul size:

Long mm

Width mm

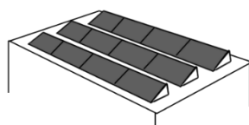
Thickness mm

Select product type:



26H

26.1H



29H

29.1H



Important information!

Check with the technical data sheet of the photovoltaic modules whether the module can be installed on the short side without deformation.

If you do not know this, you should choose **26.1H** or **29.1H**



Structure inclination



10°

Installation height
(Each height requires a report)

X= meters

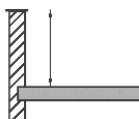
Roof slope (P) < 3°

Degrees

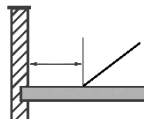
%

Parapet height

Distance of the parapet to the installation



cm



cm

ENSTALL

Design conditions

According to regulation

Others

(Specify others)

Wind speed

Km/h

Snow load

Kg/m²

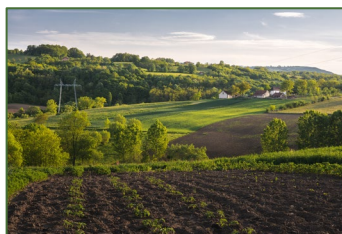
Installation zone:



Urban zone



Industrial zone



Rural zone



Coastal zone

Type of flat roof

Concrete slab

Painted concrete slab

Type TPO-PVC

Gravel (The structure Will be placed on the bottom layer of the gravel)

Anti-slip paving

General information

- If the required conditions are not specified the study shall be carried out with the calculations and design conditions of the standard products, for other design conditions the customer shall provide all necessary information required by Enstall.
- Roof mounting requirements:
 - o Check the condition of the roof and its load-bearing capacity.
 - o The roof or deck surface must be clean and dry. Irregularities in the roof must be corrected or eliminated.
 - o To avoid wind turbulence, a minimum safety distance from roof edges and other obstructions (e.g. chimneys, vents, etc.), as specified in the wind coefficient sheet, must be maintained.
 - o Flat roofs with a pitch of more than 3° must be bolted, not lashed.
 - o All assembly instructions and product specifications provided by Enstall must be observed.
 - o Disassembly of the supports is carried out in reverse order to assembly.



Erare files