

S95-EN



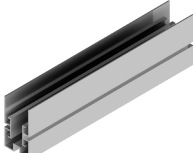
Side clamp
S10-EN



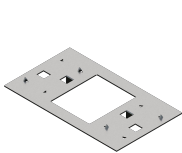
Mid clamp
S11-EN



Profile
G1-EN



Joint
UG1-EN



Grounding
S13



End cap
TG1

Specifications

Description	Coplanar support for mounting photovoltaic modules on light roofs.
Installation surface	Light roof
Type of anchoring	Screwed
Materials	Aluminium sections EN AW 6005 A T6 Screws: A2-70 stainless steel
Features	Vertical arrangement of modules. Specific design, adapting the structure to the needs of each project: -Calculation and distances between fixings optimised to support the specific loads according to current regulations at the point of implementation or customer specifications. -All connections are made with screws and the material is delivered identified, machined and with an assembly manual adapted to your project. -Specific calculation report for your project. -Direct technical support from the structure manufacturer.
Panel length	From 2279 to 2460 mm.
Tighten torque	Screw M8 Hexagonal: 20 Nm Screw M10 Hexagonal: 40 Nm
Guarantees	Structural: Up to 25 years Anti-corrosion: Up to 25 years

Tools needed:



Sunfer Estructuras, S.L.U.

Security:



Marking
ES19/86524 CE

www.sunferenergy.com

Subject to change without notice. Product illustrations are examples and may differ from the original.